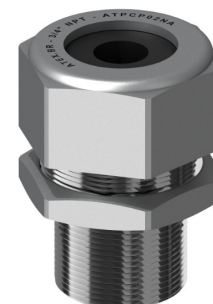


Prensa cabos ATPC

Aplicações

- Utilizado na entrada e na saída de cabos elétricos, em invólucros à prova de tempo.
- Ideal para uso em locais industriais para as terminações a seguir:
 - Interruptores industriais.
 - Centrais de controle de motor.
 - Estruturas laminadas em metal.
 - Caixas e compartimentos fundidos a ações, permitindo a remoção de caixas sem a remoção do eletrodo.

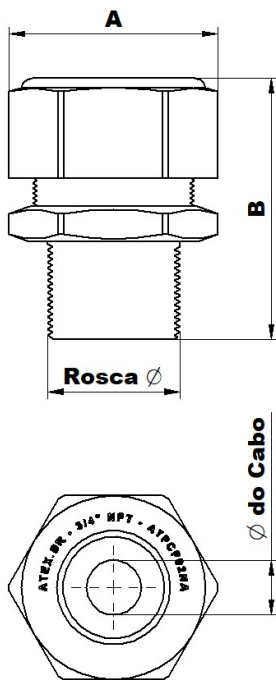


Características

- Corpo, contra corpo hexagonal com Ø de 1/2" a Ø 1-1/2" e octogonal de Ø 2" a Ø 4".
- Roscas NPT ou BSP de Ø 1/2" a 4".

Materiais

- Alumínio.
- O-Ring de aperto em neoprene.

Desenho Técnico	Rosca Ø	Ø do cabo (mm)		Dimensões (mm)		Código
	NPT / BSP	Mínimo	Máximo	A	B	Alumínio
	1/2"	6,0	7,5	32,0	47,0	ATPCP01NA
	1/2"	7,5	9,0	32,0	47,0	ATPCM01NA
	1/2"	9,0	10,0	32,0	47,0	ATPCG01NA
	3/4"	10,0	12,5	40,0	47,0	ATPCP02NA
	3/4"	12,5	15,0	40,0	47,0	ATPCM02NA
	3/4"	15,0	17,0	40,0	47,0	ATPCG02NA
	1"	20,0	22,5	43,0	54,0	ATPCP03NA
	1"	22,5	25,0	43,0	54,0	ATPCM03NA
	1"	25,0	28,0	43,0	54,0	ATPCG03NA
	1-1/4"	28,0	31,0	58,0	60,0	ATPCM04NA
	1-1/4"	31,0	34,0	58,0	60,0	ATPCG04NA
	1-1/2"	34,0	37,0	70,0	68,0	ATPCP05NA
	1-1/2"	37,0	40,0	70,0	68,0	ATPCM05NA
	1-1/2"	40,0	43,5	70,0	68,0	ATPCG05NA
	2"	43,5	47,5	84,0	73,0	ATPCM06NA
	2"	47,5	50,0	84,0	73,0	ATPCG06NA
	2-1/2"	50,0	54,0	93,0	80,0	ATPCP07NA
	2-1/2"	54,0	58,0	93,0	80,0	ATPCM07NA
	2-1/2"	58,0	62,0	93,0	80,0	ATPCG07NA
	3"	62,0	66,0	117,0	106,0	ATPCP08NA
3"	66,0	71,0	117,0	106,0	ATPCM08NA	
3"	71,0	76,0	117,0	106,0	ATPCG08NA	
4"	76,0	84,0	152,0	138,0	ATPCP10NA	
4"	84,0	92,0	152,0	138,0	ATPCM10NA	
4"	92,0	100,0	152,0	138,0	ATPCG10NA	

Prensa cabos ATPC

Como Especificar: **ATPCP01NA**

ATPC	P	01	N	A
Séries	Ø do cabo	Rosca Ø	Tipo de Rosca	Tipo de Material
ATPC	P - Pequeno	01 - 1/2"	N - NPT	A - Alumínio
	M - Médio	02 - 3/4"	B - BSP	
	G - Grande	03 - 1"		
		04 - 1.1/4"		
		05 - 1.1/2"		
		06 - 2"		
		07 - 2.1/2"		
		08 - 3"		
		09 - 3.1/2"		
		10 - 4"		